



A_{Ph}A **FOUNDATION**

A_{Ph}A FOUNDATION

2014 ANNUAL REPORT

OUR MISSION

The APhA Foundation's mission is to improve people's health through pharmacists' patient care services.

We are a nationally recognized leader in conducting research and demonstration projects and supporting programs which recognize pharmacists' vital contributions to healthcare.

Through our work we are creating an improved medication use system in the United States.

OUR CORE VALUES

Innovation ■ Collaboration ■ Respect ■ Patient-centric
Evidence-based ■ Outcomes-driven ■ Pharmacists' Role ■ Quality

On Behalf of Your Leaders



Ed Hamilton,
PharmD, FAPhA

It is an exciting time and true honor to serve as president of the APhA Foundation Board of Directors. I am proud of the great strides the Foundation has made as it advances on a strategic path which will open doors for pharmacists as healthcare providers.

In 2014, we made strong progress towards accomplishing our two mission-driven goals set forth in our strategic plan: to conduct research which creates innovative practice models and to implement and sustain programs which recognize exemplary leaders in pharmacy practice. In addition, we have advanced our communications, public relations, development, and consumer collaboration initiatives.

We have also created a new agenda to help guide and focus our research initiatives in key areas. Based on surveys and feedback, we have identified chronic disease prevention and management and other healthcare issues such as oral health as focuses for research opportunities over the next few years. We hope this agenda will continue to help mobilize our strategy and leverage the expertise of pharmacists in a way that delivers the highest quality care to patients.

I hope you will be as encouraged as I am when you read about our achievements over the past year, and that you will continue to support the Foundation as we seek to further our mission in 2015.

I would like to give a special thank you to our dedicated staff, our committed Board, and a heartfelt thank you to each and every one of you.

Sincerely,

Ed Hamilton, PharmD, FAPhA

2014-15 APhA Foundation President

I am proud to look back at 2014 and reflect on all the ways in which we fortified and expanded upon our mission of improving people's health through pharmacists' patient care services. We fostered a broader spirit of collaboration in our work with the aim of impacting patient health in an even more powerful way. In all our efforts, our focus remained the patient – the heart of our mission and the beneficiary of pharmacists' services.

In 2014, we utilized new channels to reach a wider patient audience across the nation and spread the word about our important research initiatives and project outcomes. Through our "Align My Refills" public education campaign, we connected with consumers more directly than ever before and shared the important message with over 80 million people about the benefit of working with a pharmacist through medication synchronization programs.

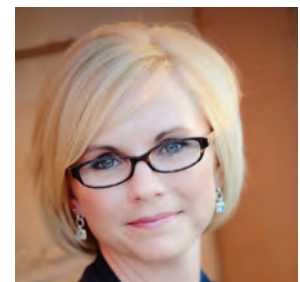
Going forward, we will continue to look for opportunities to inform the public about ways to work with their pharmacist to improve their health. We will also seek new methods and avenues of raising awareness about the APhA Foundation and pharmacists' patient care services.

On behalf of all of us at the Foundation, thank you for your support of our mission in 2014. With your support, we were able to exceed our fundraising goals for the Bowl of Hygeia, APhA Fellows Wall of Honor, and unrestricted giving. I look forward to continuing to work alongside you in 2015 as we transform healthcare for the benefit of patients.

Sincerely,

Mindy D. Smith, BSP Pharm, RPh

APhA Foundation Executive Director



Mindy D. Smith,
BSP Pharm, RPh

Our Strategic Plan: 2014 and Beyond

The APhA Foundation strategic plan demonstrates a collective vision for the future of the Foundation and pharmacy practice. The plan includes eight overarching goals.

Mission-Driven Goals:

1 Research and Translation: Bolster and focus our innovative research agenda and support existing projects to ensure strong outcomes.

This year we redefined our research agenda in an effort to pursue the most relevant topics and opportunities in healthcare. This agenda will serve as a guiding document as we seek future project funding. Key topics will fall under the headings of chronic disease prevention and management as well as emerging issues in healthcare in which pharmacists can play a key role.

2 Programs Supporting Pharmacists and Patients: Implement and sustain proven strategies that recognize pharmacists' successes and improve people's health.

Through the combined efforts of the Foundation, the National Alliance of State Pharmacy Associations (NASPA), APhA, and Boehringer Ingelheim, the full endowment of the Bowl of Hygeia Award was reached in 2014 due to individual and corporate donations. This achievement will sustain the Bowl of Hygeia Program so that each state may annually recognize a pharmacist who has contributed to the profession through his or her civic leadership and service.

Support-Driven Goals:

3 Finance/Revenue Diversification/New Business: Provide the financial resources necessary to meet the mission of the organization.

The Foundation moved forward with a plan for marketing the Patient Self-Management Credential to produce a sustainable revenue stream. Working with a marketing consulting firm, Chief Outsiders, the Foundation will implement the strategy in the upcoming year to spread the use of patient credentialing in helping patients and healthcare providers work together to achieve improved health outcomes.

4 Development/Fundraising: Sustain the work of the Foundation through creation of new revenue streams and increased donor contributions.

We are thankful for our enduring 1953 Society members. In addition, by introducing a month-to-month giving program, M-T-M partners, the Foundation is better positioned to sustain ongoing operations. It also succeeded in keeping a high volume of first time donors, which is atypical for non-profit organizations.

Support-Driven Goals (continued)

5 Communications: Bolster communications and sustain/expand current programs.

In 2014, the Foundation launched its first public education campaign directed towards consumers. The campaign, Align My Refills, was intended to inform patients and caregivers on how medication synchronization and their relationship with their pharmacist can improve their ability to manage chronic illness. Align My Refills was a strong touch point for expanding our communications to a consumer audience, earning more than 80 million media impressions. We also increased our website engagement by 20% since our new website launch in 2013.

6 Collaboration and Partnerships: Strengthen collaboration with key partners/organizations.

This year, the Foundation Board of Directors and APhA Board of Trustees met to revise the Touchstone Document between the two organizations. Both groups are working together towards a structure that will drive strategic collaboration and leverage our assets.

7 Board Governance: Strengthen Board governance and ensure the Board has a strong structure including well-chosen Board members.

The Board continued operating through a Board committee structure for 2014 and bolstered our High Impact Board model implemented in 2013. In addition, the governance committee continues to refine its gap analysis to recruit key individuals to serve on our Board.

8 Human Resources: Build capacity in the organization through strategic Human Resources planning.

The Foundation continued its investment in staff infrastructure and collaborated with multiple vendor organizations to support our ability to implement our strategic plan. These external collaborators helped to advance the strategic plan while remaining cost-effective.

Research & Innovation

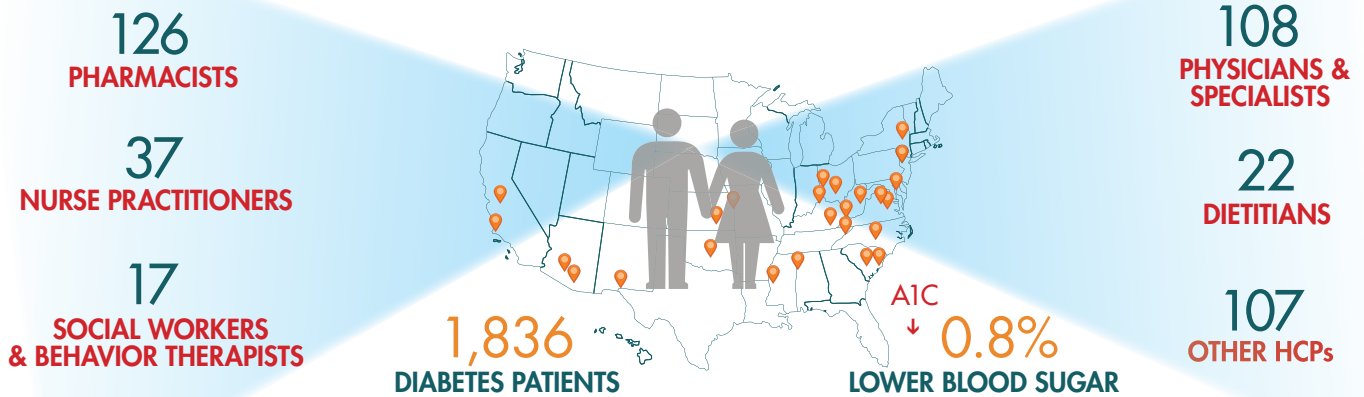
Publication of Project IMPACT: Diabetes Final Results

Our largest research initiative Project IMPACT: Diabetes culminated in two peer-reviewed articles in the *Journal of the American Pharmacists Association (JAPhA)*. One focused on the clinical outcomes

of the project while the other outlined the unique models of care delivery and characteristics of the patient populations. Across all 25 participating communities, results showed statistically and clinically significant improvement

in A1C (blood sugar) control, demonstrating that pharmacists can improve the quality of care delivery in a variety of settings and patient populations, including those who are underserved or uninsured.

Improving America's Communities Together



Our New Research Agenda

We refined our agenda this year to stay on the pulse of the latest opportunities in healthcare that could leverage pharmacists' skills and accessibility to improve care delivery. Based on survey outreach and feedback, the APhA Foundation has developed a new research agenda to guide project development through 2017 that focuses on advancing pharmacy practice in 12 specific areas within chronic disease prevention/management and healthcare issues. The four components of the agenda include: focus areas, partners, aspects of implementation, and outputs.

*Many Thanks to our
Project Sponsors*

Pfizer

Sanofi-Aventis

Bristol-Myers Squibb Foundation



Patient Self-Management Credential

In 2014, we began taking the Patient Self-Management Credential (PSMC), a highly effective tool used in many of our research projects, into new territory. The PSMC helps assess patients' knowledge of their disease so that their care can be customized to them in a meaningful way. This fall the Foundation published a manuscript in *Population Health Management* about the strategy that drives patient credentialing and results from the use of the PSMC for Diabetes. This year, we also strategized for a larger rollout by refining the web-based PSMC platform and partnering with

10 physician practices and 12 pharmacies in Cincinnati to integrate the PSMC into care.

CDC: Pharmacists and Public Health

Beginning in September, the Foundation entered into an Interpersonnel Agency Agreement with the CDC Division for Heart Disease and Stroke Prevention in which our director of applied innovation, Lindsay Watson, devotes 50% of her time to collaborating with the CDC to identify ways that pharmacy and public health can better engage with one another to improve the care of people with chronic diseases across America.

ABM/ACO Project

The Appointment Based Model (ABM) has demonstrated a positive impact on medication adherence in communities across the country, and this year the APhA Foundation began a randomized control trial that takes a first look at how adherence correlates with medical and pharmacy costs within this model. The research focuses on implementing the ABM in a Federally Qualified Health Center (FQHC) pharmacy for the first time and a Kroger grocery store pharmacy chain through a call center. The targeted population is insured by a physician-owned Accountable Care Organization (ACO). Patient enrollment was completed in 2014. The project is currently underway and data is being collected from almost 600 patients within the intervention and control groups.



ABM or Medication Synchronization: When the pharmacist coordinates the refill of multiple medications to be picked up on a single day each month.

Public Education

Aligned with our mission of improving people's health through pharmacists' patient care services are public education activities. By building public awareness around the benefits of care provided by pharmacists, we can help more consumers discover opportunities to engage with their pharmacist in a way that will improve their health outcomes.

Through funding support from Pfizer, we launched a comprehensive public education campaign, Align My Refills, during American Pharmacists Month to highlight the benefits of medication synchronization to patients and their caregivers. Overall media impressions for the campaign reached more than 80 million, informing consumers about medication synchronization services while simultaneously encouraging pharmacies to consider implementing the service if they don't already.



Outreach Strategies

In partnership with the National Council for Patient Information and Education, the Foundation hosted stakeholder representatives on October 1 from organizations such as the National Osteoporosis Foundation, the Caregiver Action Network, and the National Consumers League "Script Your Future" campaign, at APhA Headquarters to inform them about medication synchronization and devise strategies for educating their constituents of its importance. Through the support of these organizations, the APhA Foundation was able to deliver messages on the benefits of medication synchronization through an engaging whiteboard style video, educational infographic, and web resources that could be incorporated into their existing communication channels.

The APhA Foundation also conducted direct outreach to consumers by participating in interviews on national radio shows, local television stations, and print media. Interviews conducted with Foundation Executive Director Mindy Smith during a satellite and radio media tour were broadcasted in 175 U.S. cities. Local pharmacists also served as spokespersons for the campaign to provide further insight into how medication synchronization works operationally.

Align My Refills is just the starting point for the APhA Foundation's educational opportunities with consumers on the value of a relationship with their pharmacist.

ALIGN MY REFILLS APHA FOUNDATION

When patients don't adhere to their medication regimen, it can lead to ER visits, hospitalizations and adverse drug reactions.

- About **75%** of adults **40 and older** with a chronic condition say they skipped or missed a dose in the past 12 months.
- 1/3** of patients who take regular medications **miss doses** because they run out before refilling their prescription.
- 25%** say they **failed to refill** a prescription medication in time.

Non-adherence causes 125,000 DEATHS annually and accounts for **10% to 25%** of hospital and nursing home admissions.

PHARMACISTS CAN HELP
Pharmacists offering medication synchronization (med sync) programs help patients stay on their regimen.

Med sync allows you to pick up all of your ongoing medications at once on a convenient day each month.

YOUR PHARMACIST WILL:

- REVIEW ALL YOUR MEDICINES
- MAKE ANY NECESSARY CHANGES TO YOUR MEDICATIONS
- PROACTIVELY REFILL YOUR MEDICATIONS

THE OUTCOME:

- FEWER TRIPS TO THE PHARMACY
- RELIEVED WORRIES OVER MISSING DOSES OR FORGOTTEN MEDICATIONS
- MONTHLY OPPORTUNITY TO REVIEW YOUR MEDICATIONS WITH YOUR PHARMACIST

Patients are 3 to 6 times more likely to stay on their medications when enrolled in med sync programs.

The APhA Foundation's *Align My Refills* campaign encourages patients to work with their pharmacists for better health outcomes through medication synchronization.

Medication synchronization programs are beneficial for:

- PATIENTS TAKING MULTIPLE ONGOING MONTHLY MEDICATIONS
- THE ELDERLY
- PATIENTS NEW TO CHRONIC DRUG THERAPY
- CAREGIVERS AND FAMILY MEMBERS OF PEOPLE ON MULTIPLE MEDICATIONS

Resources on med sync and a map with a store locator for participating pharmacies can be found at alignmyrefills.com.

If your local pharmacy doesn't offer this service yet, talk to your pharmacist about how they can streamline your medications. Building a relationship with your pharmacist is important. Patients with a chronic condition who are most successful adhering to their medication regimen have a relationship with their pharmacist.

New Practitioner and Student Programs

Incentive Grants

The Incentive Grants for Practitioner Innovation in Pharmaceutical Care is the Foundation's longest-running program.

The program provides seed money to empower practitioners, student pharmacists, and community pharmacy residents to test and record results of patient-centered services and programs that enhance health care delivery within community and ambulatory pharmacy care settings.

Since 1993, grants totaling more than \$500,000 have facilitated the development of over 500 pharmacy-based projects, improving the health outcomes of thousands of patients across the country.

Aligned with the Foundation's focus on designing and evaluating new practice models for pharmacy, the core requirement of the Incentive Grants program is a focus on innovation.

The 2014 Incentive Grants were awarded in three project categories:

2014 Recipients

Residents and their Preceptors

Lindsay Andres, Fagen Pharmacy,
Valparaiso, IN

Vaidehi Bhatt, Walgreen's Pharmacy,
Cleveland, TX

Courtney Bradley, Kroger Pharmacy,
Cincinnati, OH

Kendra Butler, Price Chopper Pharmacy,
Overland Park, KS

Benjamin Culpepper, Kerr Drug/UNC Eshelman
School of Pharmacy, Chapel Hill, NC

Charles Frye, Brame Huie Pharmacy,
North Wilkesboro, NC

Jessica Gomez, Centro San Vicente,
El Paso, TX

Brigid Long, Columbus Patient Care Center–
Kroger Pharmacy, Columbus, OH

Ashley Neltner, Kroger Pharmacy,
Cincinnati, OH

Daniel Herbert Incentive Grant Award
Robert Newsome, Barney's Pharmacy,
Augusta, GA

Megan Pendley, Wheeler Pharmacy,
Lexington, KY

Jonathan Rabey, Middleport Family Health Center,
Middleport, NY

Nicole Stone, ACESSPointe Community Health
Center Inc., Akron, OH

Roxane Took, UMKC/Price Chopper Pharmacy,
Gladstone, MO

Ellen Varner, Catonsville Pharmacy,
Catonsville, MD

Practitioner Innovation in Immunization Practices

Donna Montemayor, H-E-B Pharmacy,
San Antonio, TX

Brenna Neumann, Collier Drug Stores,
Fayetteville, AR

Student Pharmacist Innovation in Immunization Practices

Cassandra Song, Washington State University
College of Pharmacy, Spokane, WA

New Practitioner and Student Programs

Daniel A. Herbert Incentive Grant Award

The Daniel A. Herbert Incentive Grant Award is awarded annually to a community pharmacy resident or recent pharmacy graduate who is working to implement an innovative pharmaceutical care project within their pharmacy practice or to expand an already existing pharmacy services for which pharmacists are compensated. Thank you to Dan's family, his wife Ann Herbert and daughter Michelle Herbert Thomas, for continuing to support this award in his honor.

Community Pharmacy Foundation Support

Thank you to the Community Pharmacy Foundation for its support of the 2014 Incentive Grants Program. The Community Pharmacy Foundation has generously provided matching grant support to help fund the program since 2004. The Community Pharmacy Foundation supports research and demonstration projects that highlight new and emerging innovations in patient care related to community pharmacy practice.



2014 Incentive Grants Review Committee

The APhA Foundation thanks the pharmacists who volunteer their time to review Incentive Grant applications:

Mary Euler	Cynthia Foslien-Nash	Dave Morgan
Dixie Leikach	Heather Free	Amy Murdico
Beverly Adato	Meredith Goodwin	Lori Nagao
Donna Bingham	Kathleen Greer	Dina Norris
Thomas Worrall	Karl Hess	Natasha Petry
Cynthia Boyle	Marshall Hollis	Margaret Pitcock
Jeffrey Bratberg	Amanda Huels	Valerie Prince
Amber Briggs	Emery Johnson	John Romankiewicz
Stacey Bruce	Marcenia Knight	Jann Skelton
Abimbola Farinde	Pam Koss Justice	Cathy Taglieri
Cheryl Chee	Amy Leung	Flynn Warren
Cheryl Clarke	Lawrence Logue	Eileen Wilbur
Kimberly Daugherty	Eric Mack	Susan Rossilli
Karen Dunavant	Scott McDowell	Mitch Rothholz
Akesha Edwards	Ann McManis	Dyan Rowe Davis
Joseph Fink	Brice Mohundro	Mara Satter
		Karen Williams

Scholarships

The APhA Foundation Student Scholarship Program supports and cultivates future leaders of the pharmacy profession.

The program recognizes students who choose to invest their time in their school's APhA - ASP chapter to help shape the future of the profession while managing the demands of a full-time pharmacy curriculum.

Applicants are evaluated on their potential to become leaders for the profession of pharmacy, as demonstrated by involvement in school and community activities and academic performance.

Within this program are named scholarships that acknowledge gifts made to the fund by individuals or groups.



2014 Scholarship Recipients

Juan and Esperanza Luna Scholar:

Justin Arnall,

University of North Carolina Eshelman School of Pharmacy

Colonel Jerry W. Ross Scholar:

Daniel Corwin,

Albany College of Pharmacy and Health Sciences

Sam Kalman Scholar:

Susan Dickey,

The University of Tennessee Health Science Center
College of Pharmacy

Charles C. Thomas Scholar:

Joseph Haley,

University of Florida College of Pharmacy

APhA Foundation/APhA Auxiliary Scholar:

Lindsey Hunt,

Idaho State University College of Pharmacy

George F. Archambault Scholar:

Madeline King,

Texas A&M Health Science Center Irma Lerma Rangel
College of Pharmacy

Boyle Family Scholar:

Kevin Lonabaugh,

Shenandoah University Bernard J. Dunn School of Pharmacy

Paul Pumpian Scholar:

Melissa Luechtefeld,

University of Missouri-Kansas City School of Pharmacy

Marvin and Joannell Dyrstad Scholar:

Colleen O'Connell,

South Dakota State University College of Pharmacy

Gloria Francke Scholar:

Brittany Oliver,

Purdue University College of Pharmacy

John A. Gans Scholar:

Claire Reuter,

Xavier University of Louisiana College of Pharmacy

Mary Louise Andersen Scholar:

Lucianne West,

Northeastern University
Bouvé College of Health Sciences School of Pharmacy

Robert Gibson Scholar:

Amanda Wong,

University of Southern California School of Pharmacy

New Practitioner and Student Programs

2014 Student Scholarship Selection Committee

Our Student Scholarship Selection Committee reviews submitted applications and selects the recipients.

Thank you to our dedicated committee members:

Nancy Alvarez

Cynthia Boyle

Pam Koss Justice

Lisa Martin

Hazel Pipkin

April Shaughnessy

Jean Cottrell - Selects the George F. Archambault Scholar

Col. Michele Williams, USAF - Selects the Col. Jerry W. Ross Scholar

2014 Scholarship Contributors

The APhA Foundation recognizes those who give in support of the following scholarship and student experience funds:

Danny Allen

Nancy Alvarez

Sam Augustine

Robert Beightol

Alka Bhatt

Lawrence & May Brown

California Pharmacists Association

Red Camp

Pierre Del Prato

Allegra DePietro

Marvin & Joanell Dyrstad

Leonard Edloe

Tom English

Nicole & Fred Gattas

Robert & Linda Gibson

Julian Graubart

Metta Lou Henderson

Douglas & Katherine Hillblom

Nicki Hilliard

George Hinkle

Fred Hirning

Kelsey Japs

Deborah Johnson

Elizabeth Johnson

Melissa Kaiser

Carson Klug

Roger Lander

Brian Lawson

Kevin Lonabaugh

Vivian Loveless

Matthew Maddox

Bernice Man

Keith & Macary Marciniak

Steve Mattmuller

Gerald Mazzucca

Thomas Menighan

Ashley Mishoe

Michael Moné

Brian Moravan

Michael Mosley

Michael Pastrick

Neil Petry

Karen Reed

Sally Ross

Jon Roth

Lynette Sappe-Watkins

Sarah Schmidt

Allie Jo Shipman

Michael Smith

Jenelle Sobotka

Irving Sprugasci

Kathryn Stecklein

Richard Van Sant

Peter Vlasses

Diane Walker

Susan Winckler

Wilma Wong

George Yasutake

Glenn Yokoyama

Dennis and Patricia Worthen APhA-ASP Presidential Award

The Dennis and Patricia Worthen APhA-ASP Presidential Award recognizes the tremendous leadership the president of APhA-ASP provides to student pharmacists during his or her term in office.

Furthermore, the award recognizes the APhA-ASP president and president-elect's significant personal and professional commitment to advance the profession of pharmacy.

Beginning in 2013, the president-elect now sits on the APhA Foundation Board of Directors.

2014 Recipients



Brandi Hamilton,
APhA-ASP National
President,
University of Arkansas for
Medical Science



Nick Capote,
APhA-ASP
National President-elect,
The University of Tennessee
Health Science Center

APhA Carl F. Emswiler Summer Internship in Association Management

The Emswiler Summer Internship in Association Management provides student pharmacists experience in national association activities, pharmacy practice issues, educational programming, state services, scientific affairs, student affairs, public relations, and project management.

2014 Recipient



Anjoli Punjabi,
University of Minnesota College of Pharmacy

"The Carl F. Emswiler Internship was an incredible experience that influenced the direction of my career. I had the opportunity to meet individually with key APhA staff, collaborate on student development projects, learn about multiple perspectives on legislation affecting the future of pharmacy, help plan and implement the Summer Leadership Institute, and develop a social media strategy for APhA. It was an honor to take part in work that has such a significant impact on student pharmacists across the country."

—Anjoli Punjabi

New Practitioner and Student Programs

Executive Residency

The APhA Foundation Executive Residency in Association Management and Leadership prepares pharmacy college graduates for leadership positions within the profession and other health-related organizations and in the many aspects of association management.

The residency is a postgraduate training program under the direction of the Executive Director of the APhA Foundation and through the Knowlton Center for Pharmacist-Based Health Solutions.



Ryan Burke, PharmD

2013-14 Executive Resident

Ryan earned his PharmD from the University of Louisiana at Monroe. He was highly involved as a student pharmacist in APhA-ASP, Phi Delta Chi, Phi Lambda Sigma and the Louisiana Society of Health-System Pharmacists. He is currently Senior Manager, Governance & Practice Initiatives at APhA.

“As a student pharmacist, I knew I wanted to pursue something unique, and the Executive Residency offered just that. The opportunity to interact with pharmacy leaders and a dynamic and talented APhA and APhA Foundation staff was one of the many highlights of the program. Experiencing first-hand how a national organization can impact the profession and ultimately improve patient care was extremely rewarding.”

—Ryan Burke

Brian Wall, PharmD

2014-15 Executive Resident

Brian Wall graduated from Drake University in Des Moines, IA, with a PharmD. Brian was involved in multiple pharmacy organizations during his academic career. Highlights of Brian’s residency include working on projects such as coordinating the first student programming events at the Joint Federal Pharmacy Seminar, presenting to groups on the power of advocacy and APhA’s key legislative priority, and being integrated into multiple practice affairs and research projects.

“A behind the scenes view into the profession of pharmacy sums up my Executive Residency experience. It has provided me with the ticket to work on impactful projects and allowed me to meet many influential pharmacists, staff members, and students from across the country. I have truly seen how, through the work of members and staff combined, associations can impact the entire profession and improve the delivery of patient care services.”

– Brian Wall

Recognition

Pinnacle Awards

The Pinnacle Awards, established in 1998 by the APhA Foundation's Quality Center, celebrate significant contributions to the medication use process through increasing patient adherence, reducing drug misadventures, promoting the use of national treatment guidelines, improving patient outcomes, or enhancing communication among the members of the healthcare team.

Premier support for the program is provided by an independent educational grant from Merck. It is additionally supported by an educational donation provided by Amgen.

In 2014, the inaugural "Pinnacle Awards Innovations in Pharmacy Practice" lecture was held at the University of Maryland School of Pharmacy in Baltimore. Kelly Boesen and Sandra Leal of El Rio Community Health Center were the featured speakers. The lecture was supported by an educational grant from Amgen.



2014 Recipients

Individual Award for Career Achievement Category

Presented to an individual who by his or her actions has demonstrated exceptional leadership in enhancing health-care quality and medication use.



Hae Mi Choe, PharmD

Dr. Hae Mi Choe is a Clinical Associate Professor of Pharmacy at the University of Michigan College of Pharmacy and serves as the Director of Ambulatory Care Transformation within the University of Michigan Health System's (UMHS) Department of Pharmacy Services. She has also recently been appointed as the Director of Pharmacy Innovations & Clinical Practices within the UMHS Faculty Group Practice (FGP), the health system's physician group practice. For the past 15 years, Choe has been a pioneer in advancing the role of pharmacists in the ambulatory care setting and within organized systems of care, such as the Patient Centered Medical Home (PCMH) and Accountable Care Organizations (ACOs). At the University of Michigan she has served as the primary leader of these pharmacy services, which have become a model nationally.

Recognition



Group Practice-Health System-Corporation Category

Recognizes a significant scientific contribution and/or quality improvement project.

The Kroger Company

The Kroger Company ranks as one of the world's largest retailers, crossing 19 divisions in 34 states with annual sales of more than \$96 billion. Additionally, the company manages over 2,100 pharmacies nationwide which include City Market, Dillon's, Fred Meyer, Fry's, King Soopers, QFC, Ralphs, Smith's Food and Drug, Kroger Supermarkets, and most recently Harris Teeter. Kroger's mission is to improve the lives of patients and health of communities by delivering quality care, optimal medication use, and better outcomes. While performing traditional community pharmacy dispensing functions, Kroger is committed to providing a holistic, personalized, quality health experience. Its everyday clinical services include immunizations, Medication Therapy Management (MTM), and point of care testing/screening.

Government Agency–Nonprofit Organization–Association Award Category

Special emphasis in this category is placed on submissions that assist patients and their caregivers in achieving better outcomes from their medications.



El Rio Community Health Center

El Rio Community Health Center is a community-based Federally Qualified Health Center and the largest provider of medical and dental services to the uninsured and Medicaid populations in Pima County, Arizona. El Rio has 16 clinics, eight of which provide primary care, and serves over 75,000 patients annually—of which about two-thirds are Hispanic, just over ten percent are Native American, three-quarters live at or below the poverty line and nearly one-third are uninsured. El Rio has implemented a highly successful clinical pharmacist-led diabetes disease management program since August 2001. This program is both an organizational intervention (pharmacy-led team care and quality improvement) and patient intervention (diabetes education and self-management training).

Pinnacle Awards Selection Committee

Tim Canning
President and Chief
Operating Officer,
HealthPlan Data
Solutions

Marghie Giuliano, RPh, CAE
Executive Vice President,
Connecticut Pharmacists
Association

Jimmy Mitchell,
BSPHarm, MS, MPH
Founder,
Jimmy Mitchell &
Associates, LLC

Jerry Moore, RPh, FAPhA, JD
Director of State
Government Affairs,
Teva Pharmaceuticals

Recognition

Bowl of Hygeia Award

The Bowl of Hygeia Award recognizes pharmacists who have shown outstanding civic or social leadership in their communities. Since its introduction more than 50 years ago, the honor of being a Bowl of Hygeia recipient has been a career highlight for more than 3,000 pharmacists around the nation. It is considered one of the most prestigious awards in the profession.

In 2010, the APhA Board of Trustees committed \$250,000 to establish an endowment for the Bowl of Hygeia through the APhA Foundation. In partnership with the National Alliance of State Pharmacy Associations (NASPA), APhA and the APhA Foundation set a goal of raising \$600,000 to sustain the tradition of this treasured award. We are proud that the endowment goal was exceeded in 2014.

Special thanks to our donors and the state pharmacy associations for helping us achieve this goal. We also would like to recognize Boehringer Ingelheim for providing premier support from 2012-2014 to sustain the operations of the long-standing tradition of the Bowl of Hygeia during the endowment fundraising.



Special thanks to Boehringer Ingelheim for Premier Support of the 2014 Bowl of Hygeia program.

Bowl of Hygeia Endowment Contributors

Ambassador Level (\$25,000+)

Amgen
Boehringer Ingelheim Pharmaceuticals
Pharmacists Mutual Companies
TEVA Pharmaceuticals
U.S. Pharmacopeial Convention

Principal Level (\$10,000-\$24,999)

Academy of Managed Care Pharmacy
American College of Apothecaries
Community Pharmacy Foundation
Albert & Virginia Lockamy
National Community Pharmacists Association

Attaché Level (\$5,000-\$9,999)

American Association of Colleges of Pharmacy
Karen Reed
Tennessee Pharmacists Research
& Education Foundation

Leader Level (\$1,000-\$4,999)

Alaska Pharmacists Association
American Pharmacy Services Corp.
Benjamin & Elaine Bluml
Cynthia Boyle
Larry Braden
Lawrence & May Brown
Kenneth Calvert
Paul Chace
Bruce Clayton
Leon & Margaret Claywell
Carla Cobb
Kenneth Couch
Da Vinci Group

Robert Duey
Fred Eckel
William Faccone
Julian & Betty Fincher
Karrol & Vicki Fowlkes
Robert Greenwood
Robert Griffiths
Donald Gronewold
Ed & Ann Hamilton
Steven Hartwig
Dennis Helling
Fred Hirning
Marion Hoar
Mark Hobbs

Marshall Hollis
 Gregory Hoyman
 Lowell Irby
 Emery Johnson
 Bruce Johnson
 Russell Johnson
 T. Johnsrud
 Howard Juni
 Winnie Landis
 Neil & Deanna Leikach
 Eugene & Susan Lutz
 Eddie Madden
 Thomas Menighan
 Jacob & Mary Miller
 Robert Ohrlund
 Robert & Ann Osterhaus
 Katherine Petsos
 Joan & Richard Reeves
 Julian Reynolds
 Gordon Rosenthal
 Leo Ross
 Michael Sanborn
 Harvey Schmidt
 Nelson Showalter
 David Smith
 Robert & Rebecca Snead
 Robert Stessman
 John & Susan Sutter
 Thomas Temple
 Theodore Tong
 Joseph Valdez
 Randall Vanderveen
 Timothy Vordenbaumen
 James Walker, Sr.
 Don Wall

Flynn Warren
 Theresa Wells-Tolle
 Pamela Whitmire
 Donald Williams
Steward Level (<\$1,000)
 Angela Adams
 Kenneth Aday
 Robert Addison
 Joseph Allegretti
 Brian Ambrefe
 Howard Anderson
 Roberta Armstrong
 Fred Baillie
 Gregory Baise
 John Balch
 Roger Ball
 Belinda Ballard
 Mary & Richard Barmore
 Charles Barnes
 Margaret Bath
 John Beasley
 William Beasley
 James Beatty
 Joseph Bechtel
 Lance Berkowitz
 William Bethmann
 Cassandra Beyerle
 Frances Blair
 James Bobo
 Gary Boehler
 J. Robert Bradham
 Samuel Brog
 Anthony Brooklere
 George Browning

Buddy Bunch
 Heather Burney
 Robert Burr
 Thomas & Alice Burris
 Joseph Burton
 Donald Butsch
 Robert Bylone
 Larry & Doris Ann Calhoun
 Lane Call
 Doug & Joan Campbell
 Matthew Carrico
 Mario Casinelli
 Michele Catalano-Musheno
 Cayce's Pharmacy, Inc.
 Patricia Churchill
 James Coast
 Joseph Cross
 Rebecca Culbertson
 Joe Dalton
 David Darby
 James Davis
 Joseph Dean
 Gary Delander
 Doris Denney
 Jonathan Denslow
 Betty Derryberry
 Donald Dickson
 Bob Dishman
 Robert & Rita-Claire Doyle, Sr
 Denise Doyon
 Ralph Duff
 Leonard Edloe
 Donald Ekdorn
 Donald Elliott
 Ida May Englehart

Recognition

Patricia Epple	Robert & Ann Hennessy	Larry Krasner
Family Drug, Inc.	J. Myrle Henry	Gregory Krieger
Christine Farnham	Ralph Heuerman	Terrance Kristensen
James Fenno	Thomas Hodel	T. Jack & Stephanie Landham
William & Kathleen Ferri	Chris Hogan	Mark Lapouraille
Brian Fingerson	Paul Holly	Victor Law
Steve Firman	Arnold Honkofsky	David Leach
Charles Fletcher	Sheila Hopper	Melvin Lichtenfeld
Murhl Flowers	Brian Hose	Geraldine Liebert
John Forbes	Ron Hospoka	Patricia Lind
Calvin Freedman	Tom Houchens	Philip Losch
Paul Freiman	Carl Hudson	Frank Lundrum
Dennis Galluzzo	Walter Hughes	Nasir Mahmood
Wendall Gaston	Kirk Irby	James Main
Steven Geoffroy	Nicholas Ivans	Ray Marcrom
Brian Gerth	Paul & Elaine Iverson	Richard Marshall
Linda Gore Martin	Barry Jacobs	Bruce Martin
Dwaine Green	Robert & Tina Johnson	Matthew & Aleshea Martin
Ernest Gregg	Danny Johnson	Maryland Pharmacists Association
John Grossomanides	Terry Johnson	Vincent Massimiano
William Grosz	Patty Johnston	Gordon Mayer
James Guidry	Galen Jordre	Brenda McBride
William Hadley	Melissa Kaiser	Robert McFalls
Rosemarie Halt	Arnold Karig	Patrick McKercher
George Hammons	Melvyn Kawahara	William & Beverly McMakin
Mayer Handelman	Douglas Kay	Randy Meents
Lamar Hansen	James Keene	Bernard Miller
John Harmon	Joseph & Donna Kellogg	Wayne Miller
Janet Hart	Ronald Kennedy	Fred Mills, Jr.
James Harter	Terry Kepka	J. Scott Miskovsky
D. Matt Hartwig	Elizabeth Keyes	Jerry Moore
John Heaton	James Kidwell	Harvey Morgan
Wayne & Helen Hedman	Chris Killmeier	Joseph Mosso
Frank Hemingway	Keith Kittinger	Jack Mullins
Thomas Henig	Delmar Kramersmeier	Jacqueline Murphy

James Myers	Lynette Sappe-Watkins	Jerry Thomas
John Navarra	Robert Scelfo	Miles Thomas
Audrey Newton	David Schoech	Heatwole Thomas
Frank Nice	Robert Schreiber	Jay & Janet Thompson
Ronald Nighswander	Dan Schreiner	Stan Thompson
Nyberg Pharmacy	James Scruggs	Patricia Thornbury
Robert Oakley	Ronald Seigla	Tolliver Management Group
George Oestreich	Lloyd Sellers	W. Ernest Turner
John & Deborah Oftebro	Bruce Semingson	Elizabeth Valentine
David Olig	Charles Shannon	Evan Vickers
Leman Olson	David & Martha Shepard	Alan Vogenberg
Edward Osborne	Matthew Shimoda	Herbert Von Goerres
Harold Osteen	Bruce Sigman	Rita Waitzman
Fred Parkinson	Frank Skinner	Stanley Walczyk
Duane Parsons	Richard Smiga	Harlan Wand
Dennis Pena	Mindy Smith	James Wang
Jack Peters	Donald Smith	Jackson Ward
Vernon Peterson	Kathleen Snella	Charles Weart
Clifford Pfaff	Robert Snively	Richard Weiss
James Powers	Ralph Sorrell	Anton Welder
Charles Prickett	Geraldine Sowinski	Jerrold White
William Rathburn	Larry Stephens	Ralph Wilkie
Carroll Reagan	Stephens Pharmacy, Inc.	Horace Williams
Gary Reece	Carol Stevenson	Wisconsin Pharmacists Past Presidents Council
John Reynolds & Lynne Sylvia	Nestor Stewart	Ken Witzeling
Roland Reznicek	Paula Stover	Simon Wolf
Donald Riley	Stanley Susina	Jim Wood
Thomas Rivers	R. Duane Tackitt	Richard Yacino
Thomas Rorrer	Theresa Talbott	Jeanette Yingling
John Rosencrance	Ron Teasley	Glenn Yokoyama
J. Michael Ross	Robert Tendler	Charles & Maria Young
Frank Rubino	Bonnie Thom	Jack Zweier
Evelyn Rush	Lloyd Thomas	
Ivan Saiff	Charles Thomas	
Roy Sanderson	Jennifer Thomas	

Recognition

Fellows Wall of Honor Donors

In 2014, the APhA Foundation completed a campaign for the APhA Fellows Wall of Honor. The campaign began in 2010 when the APhA Foundation recognized a void in recognition at APhA headquarters for the distinguished Fellows. Fellows are a select group of APhA members whose outstanding professional service and achievements demonstrate a passionate commitment to the advancement of the practice of pharmacy.

The APhA Fellows Wall of Honor will be a high profile exhibit at APhA headquarters that will list all the Fellows named over time by "class." This exhibit will be paired alongside a Bowl of Hygeia Award recognition wall. An outstanding effort from our donors and "Class Champions" from the APhA Foundation Board of Directors – Ed Hamilton, Stuart Haines, Tom Menighan and Jerry Moore – helped us finalize this campaign.

** Indicates class champion*

Donors

Visionary Level (\$5,000+)

Dominic Solimando Jr.

Leader Level (\$2,500-\$4,999)

Starlin Haydon-Greatting

L. Douglas Ried

Benefactor Level (\$1,000-\$2,499)

Nancy Alvarez

Melvin Baron

Joni Berry

Daniel Buffington

Norman & Mary Campbell

W.G. Chambliss

Kenneth Cheng

Robert Davis*

Joseph Fink

Robert & Linda Gibson

Harold Godwin*

Dick & Greta Gourley

Ed & Ann Hamilton*

Dennis Helling*

Fred Hirning

Mark Hobbs

Randy Juhl

Gary & Marie Kadlec

Duane & Marilyn Kirking

Calvin & Orsula Knowlton*

Lachman Family Foundation Inc

Eugene & Susan Lutz

Keith & Macary Marciniak

Thomas Menighan*

Jerry Moore*

Adele Pietrantoni

James & Laura Ponto

Valerie Prince

Kim Sloca

Charles Thomas

Theodore Tong*

Timothy & Diane Tucker*

Wendy Weber

Pamela Whitmire*

Friends Level (\$500-\$999)

Roberta Armstrong

Frank Ascione

Charles Broussard

Carol Bugdalski-Stutrud

Donald Cadwallader

Jannet Carmichael

John Cassady

Angela Cassano

Dale Christensen

Angele & Gregory D'Angelo

Donald Floriddia

Stuart and Seena Haines

Jerome & Barbara Halperin

Betty Jean Harris*

Michael & Heather Hogue

David Holdford

Brian Isetts*

Daniel Kennedy

Cherokee Layson-Wolf

Albert & Virginia Lockamy*

Michael Mosley

David Newton

Fred Paavola

Katherine Petsos

Claiborne Reeder

John Rovers

Martha Rumore

Steven & Wendy Simenson*

Ronald Small

Timothy Stroup

Norman Tomaka

Tony Tommasello

Larry Wagenknecht

Theresa Wells-Tolle*

Philanthropy

Philanthrosphere

PhilanthroSpheRxe is pharmacy's philanthropy, funding our ability to pursue strategic initiatives across our projects and programs. Our generous donors are truly our RxSuperheroes, enabling us to conduct research on innovative practice models, produce valuable new resources for pharmacists and patients, and recognize achievements that motivate advancement of the profession.



President's Circle (\$5,000+)

J. Bruce Laughrey

Executive Level (\$2,500 - \$4,999)

Benjamin & Elaine Bluml
Cynthia Boyle
Lawrence & May Brown
Tim Canning
Mark Cziraky
William & Sharon Fassett
Michael Ghobrial
Emery Johnson
Elizabeth Keyes
William Riffée
Mindy Smith
Timothy & Diane Tucker
Eleanor Vogt &
James Kuperberg
Debra Weintraub

Director Level (\$1,000 - \$2,499)

Alliance for Patient
Medication Safety
Nancy Alvarez
Tery Baskin
J. Christopher Bradberry
Deborah Brafford

Daniel Buffington
Laura Carpenter
W.G. Chambliss
Edward Doyle
Leonard Edloe
Mary Euler
Louis Feldman
John & Eileen Gans
Laura Gordon
Clark Gustafson
Stuart & Seena Haines
Ed & Ann Hamilton
Betty Jean Harris
Starlin Haydon-Greatting
William Heath
Dennis Helling
Douglas & Katherine Hillblom
Nicki Hilliard
Independent Pharmacy Alliance
Jeff Jellin
Elizabeth Johnson
Daniel Luce
Eugene & Susan Lutz
Kelly & Brian MacFarland
Lucinda Maine
Patrick Martin
Denise McNerney
Thomas Menighan
William Millard

Marsha Millonig
Missouri Pharmacy
Association
Jimmy Mitchell
Kenneth Musto
Matthew & Marilyn Osterhaus
PACE Alliance
Katherine Petsos
PTCB - Pharmacy Technician
Certification Board
Karen Reed
Garth Reynolds
Marilyn Rhudy
Mitch & Julie Rothholz
Melody Ryan
John Hoyt Sappe
Lynette Sappe-Watkins
Steven & Wendy Simenson
Gary & Diane Smith
Robert & Rebecca Snead
Jenelle Sobotka
Dominic Solimando
Sherri Stark
Thomas Temple
John & Joyce Vandel
Pamela Whitmire
May Woo
George Yasutake
Glenn Yokoyama

Sponsor Level (\$250 - \$999)

James Appleby
Melvin Baron
Allan Bell
Leslie Benet
Steven Benson
William Blakesley
Mark Boesen
Jeffery Bray
Gayle Brazeau
Kelly Brock
Grant Brown
Sarah Carman
C. Joseph Carr
Natalie Certo &
Josephine Certo
Patrick Clay
Christopher Decker
Jean Paul Gagnon
Rebecca Gayle
Harold Godwin
Thomas Goodrich
John Grabenstein
Julian Graubart
Mark Gravdal
Patricia Harris
William Heller
Maclay Hoyne
Joseph Janela

Philanthropy

Eric Jarvi	Donor Level	Jeffrey Baldwin	Alvin Blackmon, III
LTC Michael Johnson	(Up to \$249)	Melania Banach	Joshua Bliss
Emily Judy	Academy of Pharmacy	Nicolas Barakat	Denise Bluhm-Heise
Nancy King	Pat Achoe	Antionette Barbuto	James Bobo
Cynthia Knapp Dlugosz	Paul Ackerman	Rachel Barenie	Benita Bock
Calvin & Orsula Knowlton	ACPHS-APhA ASP	Janie Barnes	Dana Boeck
Pamela Koss-Justice	Courtney Adame	Kelli Barnes	Suanne Boehm
Mark Lapouraille	Jennifer Adams	Cynthia Barrera	Kelly Boesen
Neil & Deanna Leikach	Cindy Adibe	Donna Barrio	Sandra Bollinger
William Letendre	Sondra Adkinson	Paula Bass	Morgan Bolton
Susan Lewis	Benjamin Afoakwa	David Bateshansky	Frederick Bonchosky
Douglas Lobdell & Julie Hoff	Victoria Agbetor-Fumey	Chad Batey	Kimberly Boothe
Ray Marcrom	Lori Ahern	Sheryl Bauminger	J. Lyle Bootman
Martha Mazak	Joy Akpan	Kaye Bax	Joseph Bosworth
Edgardo Mercadante	Albany College of Pharmacy	Will Beaty	Catherine Bourg
Miriam Mobley-Smith	Gary Albers	John Beckner	Deborah Bourquin
Jerry Moore	Kevin Aloysius	Edward Bednarczyk	Grover & Mary Bowles
John O'Brien	Karen Alspector	Belmont University College of Pharmacy APhA-ASP	KayLynn Bowman
Connie Pang	Melissa Alton	Eric Benner	Bethany Boyd
Adele Pietrantoni	Joan Alvarez	Kim Benner	Jim Bracewell
Anthony Pudlo	Ann Angle	Marialice & Jon Bennett	Amber Brackett
Kimberly Robbins	APhA – American Pharmacists Association Education Dept.	Jade Bensink	Brent Brady
Edward Roche	APhA-ASP National	Remi Benzaken	Sara Brandon
Sandra Rosa	Standing Committee	Rosemary Berardi	Rochelle Braun
Karen Ryle	on Communications	Scott Bergman	Julie Breithaupt
Donald Seddon	Birute Apke	Tiffany Berkemeyer	Harrison Britt
Judith Sommers Hanson	Hazel Atienza	Katherine Berkenbile	Stan Britten
Vaiyapuri Subramaniam	Crystal Atwell	Robert Berkheiser	Alfred Bromm, Jr.
Michelle Thomas	Corinne Aucker	Kristin Berretta	Jeffrey Brommer
Lisa Tonrey	Kenneth Audus	Joni Berry	Robert Brooks
Megan Tucker	Jill Augustine	Holly Berry	Terry Brother
Thomas & Cathy Worrall	Andrea Babb	Alka Bhatt	Charles Broussard
Edward Wright	Robert Bailey	Karen Bills	Broward County Pharmacy Association, Florida
Ellen Yankellow	Kelsey Bailey	Martin Bishop	Christopher Brown
	Mya Baker	Baeteena Black	Mickie Brunner

Dennis & Anna Bryan	Amanda Cavness	Kate Corrigan	Christine Dennis
Lauren Bryant	Marcin Cebula	Micah Cost	Nelson Der
Kelsey Bryant	Elias Chahine	Jean Cottrell	Ally Dering-Anderson
Candace Bryant	Kasandra Chambers	Susan Couch	Sarah Derr
Matthew Budi	Jennifer Chang	Jennifer Courtney	Patrice DeSalvo
Holly Budlong	Ross Chang	Lindsey Coval	Edward DeSimone
Stanley Budzynski	Liza Chapman	Amanda Crabtree	Bruce & Jeannine Dickerhofe
Carol Bugdalski-Stutrud	Greg Chase	Brandon Craig	Yvonne Dietrich
My Bui	Annie Chen	Creighton University	Amie Jo Digatono
Philip Burgess	Raj Chhadua	APhA-ASP	Kell Dixon
Ryan Burke	Sarah Chi	Lauren Croll	Linh Doan
Anne Burns	John Chin	Irene Crosswell	Benjamin Dobrzynski
C. David Butler	Windy Christner	Michael Crowe	Julie Dodson
Sarah Butler	Pauline Chung	Kaitlin Crowley	Kristen Dominik
Brenna Button-Neumann	Sharon Clackum	Laura Crum	Nicholas Dorich
Andrew Bzowycykj	Ruth Clark	Harold Cunningham	Stuart Doughtie, Sr.
Gerald Cable	Cheryl Clarke	Thomas Cuomo	Kelsey Douglas
Michael Cafarella	Carmen Clelland	Anna Curl	Lisa Dragic
Thomas & Jeanine Calhoun	Jennifer Clutter	Jay Currie	Lori Drinks
Kathy & McKenzie Calhoun	William Clyde	Annette Daehler	Lee Michelle Driscoll
Marigel Camero	R. David Cobb	Brian Dalke	Susanne Dudash
Norman & Mary Campbell	Silvio Coccia	Erin Dalton	Byrdena Dugan
Catherine Canham	Antoinette Coe	Cynthia Dapore	Melissa Duke
Krista Capehart	Ed Cohen	Karen Davidson	Lacey Dunkley
Maria Caraballo	Michael Cohen	Jennifer Davis	Eddie Dunn
Jodi Carlson	Fredric Cohen	Crane Davis	Angela Dyer
Christopher Carman	Kathleen Collier	Robert Davis	Johnnie Early, II
Glenda Carr	Christopher Conder	Yasmeen Davis	Fred Eckel
Lynn Carroll	Shannon Connelly	Sophia & Anthony De Monte	Leah Eckstein
Emily Carson	Connie Connolly	Lisa Deberardine	Sharmaine Edginton
Kelsae Caruso	Ariane Conrad	Donald DeGroff	Camille Edlen
Valentino Caruso, II	Collin Conway	Pierre Del Prato	Marilyn Eelkema
Joseph Casacchia	Elizabeth Cook	Patrick Del Rosario	William Ellis
Sean Casella	Robin Cooke	Jeffrey Delafuente	Betsy Elswick
John Cassady	Michele Cooper	Samantha DeLoache	Jewell Emswiler
Jason Cavalier	Susan Cornell	Richard Deluca	Prosperity Eneh

Philanthropy

Janet Engle & Andy Donnelly	James Fox	Juleisis Almeida Gomez	Rose Harris
Chinwe Enih	Xavier Francis	Mark Gonitzke	Deborah Hauser
Jeanne Erickson	Denise Frank	Jean-Venable Goode	John Hawes, Jr.
Julie Erschen Saylor	Ame Frease	Shannon Gooden	Kirk Hayes
Jeff Erwin	Heather Free	Lori Goodman	Lisa Hayes
Darci Eubank	Freedom Pharmaceuticals	Kimberly Gough	Monica Healy
Cecilia Ezeani-Obijuru	Jennifer French	Dorothy Gourley	Heather Hellwig
Bernadette Fam	Rita Fritz	Ginger Graves	Marsha Henderson
Abimbola Farinde	Dan Furtado	Richard Gray	Meryl Henry
Michelle Farrell	Kate Gainer	Benjamin Greathouse	Allison Henry
Peter Fay	Linda Gainey	Robert Greco	Kendall Henry
Suzanne Feeney	Randy Gaither	Charles Green	Ann Herbert
Tara Feller	John Galdo	Robert Greenwood	Michelle Herbert Thomas
Donald Fellows	Tim Gallagher	Morgan Greutman	Gregory Higby
Peter & Angelica Fernandes	Patrick & Shelly Gallaher	Hailey Griffin	Ashley Hildebrand
Kevin Ferrall	Jeffery Galyon	Kimberley Griffith	Julie Hixson-Wallace
Bithia Fikru	Laurella Ganey	Robert Grisnik	Van-Anh Hoang
Ben B. Finch	Loni Garcia	Donald Gronewold	Karen Hoang
Gerald Finken	Jessica Gardea	William Grosz	Ann Hobel
Rebecca Finley	Emily Gardner	Benjamin Gruda	Linda Hoch
Steve Firman	Gretchen Garofoli	Terry Gubbins	Thomas Hoey
Cindy Fisher	Jane Gartenhaus	Victoria Guidotti	Joel Hoffman
Alison Fisher	Stephanie Gartrell	Pam Gumbs	Michael & Heather Hogue
Erin Fitzgerald	Stephanie Garza	Jose Gutierrez	Susan Holden
Ron Fitzwater	Ouita Gatton	Annie Haddad	Lauree Holliday
Rebecca Flannagan	Auburn Gehle	Erica Hahn	Sheldon Holstad
Jen Flavin	Michael Geishauer	Katherine Hale	Yunhsuan Hoover
John Flickinger	Ronnie George	Alfred Hall	Brian Hose
Tiffany Flippin	Linda Gerht	Glenda Hall	Cora Housley
David Fluitt	Sharon Germann	Richard Halter	Neal Howard
David Fogle	Stephanie Gibbs	Wendy Hamamoto	Philip Hritcko
Diane Fonner	Marsha Gilbreath	Erin Hanley	Tzu-Chi Hsu
Tiffany Forbey	Margherita Giuliano Wichowski	Melissa Hansen	Kameron Huffman
Matthew Forman	Maureen Glassberg	Judith Hanson	Marcia Hufford
Stephan & Barrie Foster	Pamela Glemboski	William Harbester	Kathy Hug
Michele Fountain	Jimmy Godwin	Carole Hardin-Oliver	Thomas Humbert

Joseph Hung	William Jones	Julie Kuhle	Shannon Link
Ellie Huntington	Jerri Jones-Cruz	Catherine Kuhn	Crystal Little
Paul Huntzinger	Thomas Jordan	Jordann Kunkel	Tawny Loera
Andrew Hwang	Evelyn Joseph	Renata Kusper	Katherine Loiacono
Marvin Hyatt	Melinda Joyce	Sara La Bella	Roxanne Loncke
Britta Ann Hystad	Randy Juhl	Leslie Lake	Brigid Long
Julia Ihlenfeldt	Tana Kaefer	Winnie Landis	George Longa
Brian Isetts	Jack Kain	Roudabeh Latifpour	Adam Loyson
Leilani Isozaki	Marsha Kapiloff	Julie Lauffenburger	Walter & Ruth Ludwig
Timothy Ives	Michael Kaplan	Pasquale LaVallo	Brianna Luft
Michelle Izor	Kendra Karagozian	Gerald Lavengood	Amy Lugo
Terri Jackson	Brittany Keener	Anandi Law	Nick Lund
Michael Jackson	Celeste Kelley	Brian Lawson	Karen Lundholm
Whitney Jandreau	Sarah Kelling	Cherokee Layson-Wolf	Stacie Maass
Jang	Byrum Kelly	Sandra & Kresta Leal	Lauren Machell
Mika Jankowski	Margaret Kenahan	Brandie LeBlanc Clawson	Denise MacKenzie
Adrienne Jantzi	Amy Kennedy	David & Judy Lee	Nahid Madadinia
Suchaiya Jariangprasert	LeAnne Kennedy	Lisa Lee	Sam Maddali
Catherine Jarvis	Karen Kern	Sarah Lee	Michael Maddux
James Jawor	Lara Kerwin	Jonathan Lee	Ellen Magalian
Lanszie Jean-Pierre	Cindy Khamphaphanh	Christine Lee-Wilson	Whitney Maher
Bryan Jennings	Saifoor Khan	Elizabeth Lehmann	Ruchi Maheshwari
Aaron Jennissen	Gordon Kile	Carrie Leichtweis	Monali Majmudar
Jan Jens	Mary Klein	Crystal Lennartz	Michael Manolakis
Michele Jenson	Jamie Klucken	Paul Leoni	Jennifer Marcelo
Alli Jerman	Carson Klug	Shellie & Richard Lepucki	Keith & Macary Marciniak
Virginia Jimenez	Misty Knack	Norman Leshan	Etella Marcovici
Francisco Jimenez Ramirez	Janice Knight-Cooper	April Letcher	Arthur Margolis
Miyen Joa	Alison Knutson	Joel Levy	John Marion
Terry Johnson	Anne Kome	A. Lewis	Coreen Markland
Michelle Johnson	Anne Marie Kondic	Megan Lewis	Ariel Martin
LaWanda Johnson	Marina Korogoda	Nadine Liaw	Alisha Martin
Brittany Johnson	Jessica Kronz	Rachel Lienemann	Thirsa Martinez
Rebecca Jones	Mark Krueger	Paul Limberis	Humberto Martinez
Harry Jones	Ashley Krumenacker	David Line	Michael Martz
Holly Jones	Lindsay Kubina	June Ling	Behshied Mashhoan

Philanthropy

Kristen Masood	Jacob & Mary Miller	Minh Ngo	Mohammed Patel
David Matthews	Laura Miller	Chi Ngo	Roshni Patel
Melissa Mattison	Wayne Miller	Kim Tien Nguyen	Dhiren Patel
Kim Matuszak	Steven Miller	Trang Nguyen	Pritesh Patel
Katelynn Mayberry	Kathryn Mims	Jordan Nicholls	Shrina Patel
Everett & Wanda McAllister	Brittany Mistele	Paula Niciolo	Aayush Patel
James McAuley	Yvette Mitchell	Karl Niggemeyer	Aimee Patterson
Anthony McCarty	Wendy Mobley	Paula Nociolo	Brittany Pauly
Jill McClellan	Tara Modisett	Kamala Nola	Mike Pavlovich
Cathleen McCormack	Leslie Mohler	Staci-Marie Norman	Kathleen Payne
Lindsay McCoy	John Moisan	Denise Norman	Perry Pearson
Robin McCready	Maura Moore	Sven Normann	Linda Pedersen
Bryan McCullough	Anne Moorman	Nova Southeastern	Christina Pella
Marsha McDonald	Andrea Morales	Univeristy APhA-ASP	Geoffrey Pensanka
Brenda McElligott	David Morgan	Fort Lauderdale Chapter	Marisel Pereda
Sara McElroy	Allan Morris	Annalee Nystrom	Pat & Thomas Person
Amanda McEvoy	Paul Morrow	Christan Nyweide	David Peters
Robert McFalls	Cortney Mospan	Ann Oberg	Vernon Peterson
Kevin McGuire	Kelsey Moss	Julie Oestreich	Andrew Peterson
Lindsey McKinney	Jennifer Moulton	Diane Ogborn	Pharmacists Preventing Suicides
John McLachlan	Joseph Mulato	Makanjuola Olabiyi	Kristi Phelps
Kim McLean	Stephen Mullenix	Brittany Oliver	Christina Phillips
Sherrie McNamara	Ellen Munro	Tony Olson	Chelsea Phillips
Courtney Meade	Helen Munroe	Phillip O'Neill	Jennifer Pierpont
Breanne Meier	Thomas Munyer	Jennifer Orozco	Mark Pilkington
Gloria Meredith	Marilyn Murphree	John Osborn	Mark Pilkington
Mary Meredith	Marilyn Murphree	Samuel Osei	Pamela Piotrowski
Jerome Merkel	Timothy & Kerri Musselman	Robert & Ann Osterhaus	Mary Jonelle Pisaneschi
Jennifer Meurer	Kevin Musto	John Osterhaus	Gina Pitz
Kyra Michalski	Randall & Deirdre Myers Myxter	Jane Osterhaus	Steve & Megan Platou
Michigan Pharmacists Association	Karen Nagel-Edwards	Obadiah Oyer	Megan Platou
Linda Mick	Ghaidaa Najjar	Heather Page	Stephen Pomerance
Thomas Middlebrooks	George Nathan	Terry Pak	Dana Pompey-Powell
Gary Milavetz	Carmen Negron-Reed	Melissa Pammer	Rachel Pontikes
William Millar	Julie Nelson	Michael Paquin	Lara Popovich
	Amanda Nelson	Kiersten Pasternak	Johnny Porter
	Dean Ng		

Cyndi Porter-Frase	Jeanette Roberts	James Schiffer	Mollie Sloom
Kristen Postier	Kevin Roberts	Brittany Schmidt	Ronald Small
Brittany Powers	Janet Robertson	Sierra Schmidt	David Smith
Jocelyn Prang	Elizabeth Robertson	Gary Schneider	Donald Smith
Elizabeth Pryne	Daniel Robinson	Lynne Schneider	Michael Dean Smith
Ashley Pugh	Casey Robinson	Jessica Schneider	Tiffany Smith
Mary Ellen Pumper	Megan Robinson	Lisa & Robert Scholz	Daphne Smith Marsh
Amber Purdy	Jaclyn Robinson	John Schulte	Patricia Snider
Ghanshyam Purohit	Denise Robison	Beverly Schulz	Roger Snook
Morgan Pusek	Patrick Rocafort	Hal Schwartz	Kristina Soares
Lynn Quearry	Charmaine Rochester	Michael Schwartz	Satwinder Sohal
Danielle Quinn	Jeff Rochon	Thomas Schwartz	Olubusola Sokale
Nicholas Ralph	Jen Rodis	Diane Schwilke	Cassandra Song
Ashokkumar Ramalingam	Marie Roke Thomas	Diana Segawa	Rebecca Sorrell
Manoj Rathi	Hannah Rolling	Joan Seif	South College APhA-ASP Chapter
Tom Rawls	Rosemary Rosdahl	Deanna Seiler	Marilyn Speedie
Carol Reagan	Leo Ross	Chandra Sekar	Rachelle Spiro
Janet Redmond	Jon Roth	Jim Semchism	Sheri Sponsler
Jeffrey Reitz	Michael Rothstein	Alexa Sevin	Paul Srnis
Camille Reliford	Ashley Rowand	Bethany Sharpless	Lucy Stanke
Deborah Reyes	Janelle Ruisinger	Brian & Kayce Shealy	Sharon Stator
Lois Reynolds	Renata Rumold	Matt Shidler	Joseph Stelzer
Marci Reynolds	Kristin Rumsey	Peggy Shih	Ann Stephenson
Earl Rhoads	Masaru Saito	Matthew Shimoda	Andy Stergachis
Stuart Rhodes	James Sakowski	Allie Jo Shipman	Karen Sternfeld
Peter Rice	Michael Sanborn	Jody Shollenberger	Robert Stessman
Whitney Rice	Jessica Sanchez-Cruz	Jeri Sias	Gary Stoehr
Marc Ricker	Thomas Sanders	Siok-Hiok Siau	Janel Stomberger
Kristen Ricker	James Sanders	Bethany Sibbitt	Joan Stover
Steven Riddle	Ralph Saroyan	Deborah Simmons	Phoebe Stracener
Kelly Ridgway	Kimberly Sasser Croley	Amanda Singrey	Holly Strom
L. Douglas Ried	Robert Satterthwaite	Karel Sinoben	Stephen Strumello
Helen Riesenber	Julie Saylor	Irwin Sitkoff	Sarah Suerte
Jacquelyn Risner	Kenneth Schafermeyer	Jann Skelton	Jerald Sveum
Nicholas Risser	David Schapiro	S. Slingsby	Ashley Sweaney
Stephanie Roach	Nancy Schiciano	Kim Sloca	

Philanthropy

Nathan Sylvain	Kelsey Turcotte	Afton Wagner	Amanda Williams
Nancy Tabor	Tiffany Turner	Megan Wagner	William Wimmer
Michael Tabrizi	Lauren Turner	Belinda Wagner	Susan Winckler
R. Duane Tackitt	Jon Tuttle	Kaja Wagner	Marje Winhoven
Deborah Tady	Eleanor Twigg	Donna Waites	Christopher Winslow
Takuji Tanaka	Peter Tyczkowski	Brian Wall	Stephen Wise
Michelle Mae Tandoc	Denise Tyler	K. Claire Walley	Camille Wissmann
Batisha Tatum-Murray	Stephanie Umphlette	Lorri Walmsley	Kristin Witt
Sandra Telesmanic	R. Unangst	Jane Walther	Casi Wood
Ryan Templeton	Gayle Unhjem	Larry Walther	Roland Wood
Jeanne Marie Ternes	University of Louisiana at Monroe	Ronald Ward	Loc (may) Woodland
Brian Terreri	Hika Urgessa	Brittany Ward	Joyce Woods
Michelle Thies	Benjamin Urick	Jessica Ward	Justin Woods
Charles Thomas	Christine Vala	Erin Warner	Marcia Worley
Jacqueline Thomas	Violeta Valadka	Flynn Warren	Dennis & Patti Worthen
Jennifer Thomas	Natalie Valentino	Lynette Wasson	Angela Wu
Janet Thomas	Peggy Van	Lindsay Watson	Betty Yamashita
Shanada Thomas	Sara Vande Walle	Krystalyn Weaver	Kathaleya Yindeemark
Bruce Thompson	R. Pete Vanderveen	Wendy Weber	Jeanette Yingling
Brent Thompson	Ellen VanStee	Amanda Weghorst	Sandra Young
Jessica Thompson	Malorie Vaughan	Kylie Weigel	Andrew Young
Sonja Thompson	Anne Vechinski	Amanda Welk	Aimee Young
Beth Toalston	Albert Veid	Courtney Weller	Jami Young
Sophie Tochioka	Amber Veid	Barbara Wells	Adam Youngblood
Norman Tomaka	John Velk	Theresa Wells-Tolle	Jon Zelisko
Margaret Tomecki	Veronica Vernon	Pamela Welton	Amanda Zessin
Bill Tomlin	Deborah Veselka	Lucianne West	David Zgarrick
Robert Touns	Arati Vibhu	Karen Whalen	Sharon Zhou
Angela Tracy	Oswaldo Vidal	Shayne Wharton	William Zipse
Deanna Tran	Jerry Vidis	Whitney White	Steven Zona
Coralynn Trewet	Adam Villarreal	Stephanie White	Latosha Zugelder
Ashley Trojcak	Jessica Voeller	Colleen Whitehead	
Maralee Trotter	Timothy Vordenbaumen	Molly Whitmore	
Hoa Truong	Bonnie Voss	Margherita Wichowski	
Dale Tucker	Pari Wafayee	Andrea Wilder	
Jacob Tunnell		Judy Ann Williams	



1953 Society Donors

The 1953 Society is a group of donor leaders who identify with the long-term vision of the Foundation and commit to giving annually to support its mission. Thanks to the contributions of our 1953 Society members, we are able to fund critical ongoing operations and provide an underpinning for future growth.



Nancy Alvarez
 Tery Baskin
 Benjamin & Elaine Bluml
 Cynthia Boyle
 J. Christopher Bradberry
 Deborah Brafford
 Lawrence & May Brown
 Daniel Buffington
 Tim Canning
 Laura Carpenter
 W.G. Chambliss
 Mark Cziraky
 Leonard Edloe
 Mary Euler
 William & Sharon Fassett
 John & Eileen Gans
 Clark Gustafson
 Stuart & Seena Haines
 Ed and Ann Hamilton

Betty Jean Harris
 Starlin Haydon-Greating
 William Heath
 Dennis Helling
 Nicki Hilliard
 Jeff Jellin
 Emery Johnson
 Elizabeth Johnson
 Elizabeth Keyes
 J. Bruce Laughrey
 Daniel Luce
 Eugene & Susan Lutz
 Kelly & Brian MacFarland
 Lucinda Maine
 Denise McNerney
 Thomas Menighan
 Marsha Millonig
 Jimmy Mitchell
 Matthew & Marilyn Osterhaus

Karen Reed
 Katherine Petsos
 Marily Rhudy
 William Riffie
 Mitch & Julie Rothholz
 Melody Ryan
 John Hoyt Sappe
 Lynette Sappe-Watkins
 Steven & Wendy Simenson
 Gary and Diane Smith
 Mindy Smith
 Robert & Rebecca Snead
 Jenelle Sobotka
 Dominic Solimando
 Thomas Temple
 Timothy & Diane Tucker
 John & Joyce Vandel
 Eleanor Vogt & James Kuperberg
 Debra Weintraub
 Pamela Whitmire
 May Woo

PHARMACISTS CARE!

Celebrating American Pharmacists Month, Pharmacists Care is a campaign that provides a way for pharmacists and supporters of the profession to make a visible statement of the impact they have on patients and raise awareness of the influence pharmacists have on healthcare. Donors can choose to show their individual pride in the profession or recognize mentors or employees.



THANK YOU TO OUR 2014 PHARMACISTS CARE DONORS

Academy of Pharmacy

Paul Ackerman

ACPHS-APhA ASP

Sondra Adkinson

Karen Alspector

Nancy Alvarez

APhA-ASP National Standing
Committee on Communications

Crystal Atwell

Corinne Aucker

Kenneth Audus

Tery Baskin

Belmont University College of
Pharmacy APhA-ASP

Marialice & Jon Bennett

Katherine Berkenbile

Karen Bills

Baeteena Black

Benjamin & Elaine Bluml

Kelly Boesen

J. Lyle Bootman

Cynthia Boyle

Julie Breithaupt

Kelly Brock

Charles Broussard

Broward County Pharmacy Association,
Florida

Lawrence & May Brown

Mickie Brunner

Dennis & Anna Bryan



- | | | |
|-------------------------------|-------------------------------|-------------------------------|
| Lauren Bryant | Lisa Dragic | Starlin Haydon-Greatting |
| Daniel Buffington | Susanne Dudash | Dennis Helling |
| Carol Bugdalski-Stutrud | Melissa Duke | Meryl Henry |
| Ryan Burke | Eddie Dunn | Douglas & Katherine Hillblom |
| Anne Burns | Fred Eckel | Nicki Hilliard |
| Sarah Butler | Leonard Edloe | Julie Hixson-Wallace |
| Andrew Bzowycykj | William Ellis | Karen Hoang |
| Krista Capehart | Jewell Emswiler | Thomas Hoey |
| Christopher Carman | Jeff Erwin | Yunhsuan Hoover |
| Kelsae Caruso | Michelle Farrell | Independent Pharmacy Alliance |
| Sean Casella | Donald Fellows | Leilani Isozaki |
| Jason Cavalier | Kevin Ferrall | Timothy Ives |
| Marcin Cebula | Steve Firman | Terri Jackson |
| Sarah Chi | Tiffany Forbey | Michael Jackson |
| Windy Christner | Linda Gainey | Joseph Janela |
| Sharon Clackum | John Galdo | Bryan Jennings |
| Cheryl Clarke | Patrick and Shelly Gallaher | Emery Johnson |
| Jennifer Clutter | John & Eileen Gans | Michelle Johnson |
| Antoinette Coe | Loni Garcia | LaWanda Johnson |
| Robin Cooke | Gretchen Garofoli | William Jones |
| Brandon Craig | Jane Gartenhaus | Tana Kaefer |
| Creighton University APhA-ASP | Auburn Gehle | Jack Kain |
| Michael Crowe | Michael Geishauer | Marsha Kapiloff |
| Thomas Cuomo | Marsha Gilbreath | Celeste Kelley |
| Jay Currie | Margherita Giuliano Wichowski | LeAnne Kennedy |
| Mark Cziraky | Jean-Venable Goode | Karen Kern |
| Karen Davidson | Thomas Goodrich | Jamie Klucken |
| Robert Davis | Terry Gubbins | Carson Klug |
| Jeffrey Delafuente | Pam Gumbs | Anne Marie Kondic |
| Samantha DeLoache | Stuart & Seena Haines | Catherine Kuhn |
| Ally Dering-Anderson | Ed and Ann Hamilton | J. Bruce Laughrey |
| Sarah Derr | William Harbester | Cherokee Layson-Wolf |
| Bruce & Jeannine Dickerhofe | Betty Jean Harris | Sandra and Kresta Leal |

Philanthropy

PHARMACISTS CARE!

David and Judy Lee	Pharmacists Preventing Suicides	Robert and Rebecca Snead
Neil & Deanna Leikach	Jennifer Pierpont	Jenelle Sobotka
Nadine Liaw	Steve and Megan Platou	South College APhA-ASP Chapter
Brigid Long	Stephen Pomerance	Marilyn Speedie
Eugene & Susan Lutz	Lara Popovich	Sherri Stark
Kelly & Brian MacFarland	Brittany Powers	Thomas Temple
Sam Maddali	Ashokkumar Ramalingam	Charles Thomas
Keith & Macary Marciniak	Karen Reed	Michelle Thomas
Humberto Martinez	Garth Reynolds	Brent Thompson
Thirsa Martinez	Lois Reynolds	Norman Tomaka
James McAuley	Whitney Rice	Margaret Tomecki
Cathleen McCormack	Peter Rice	Deanna Tran
Sara McElroy	Marc Ricker	Timothy & Diane Tucker
Robert McFalls	Steven Riddle	Megan Tucker
Lindsey McKinney	William Riffée	Jacob Tunnell
Thomas Menighan	Kevin Roberts	Gayle Unhjem
Michigan Pharmacists Association	Jeff Rochon	University of Louisiana at Monroe
Gary Milavetz	Jen Rodis	R. Pete Vanderveen
William Millar	Jon Roth	Arati Vibhu
Marsha Millonig	Mitch & Julie Rothholz	Jessica Voeller
Anne Moorman	Melody Ryan	Eleanor Vogt & James Kuperberg
Thomas Munyer	Lynette Sappe-Watkins	Kaja Wagner
Timothy & Kerri Musselman	Kimberly Sasser Croley	Krystalyn Weaver
Kam Nola	Julie Saylor	Wendy Weber
Sven Normann	Nancy Schiciano	Barbara Wells
Nova Southeastern Univeristy APhA- ASP Fort Lauderdale Chapter	Lisa & Robert Scholz	Theresa Wells-Tolle
Makanjuola Olabiyi	Michael Schwartz	Lucianne West
Matthew & Marilyn Osterhaus	Diane Schwilke	Karen Whalen
Pritesh Patel	Brian & Kayce Shealy	Pamela Whitmire
Mike Pavlovich	Steven & Wendy Simenson	Marje Winhoven
Geoffrey Pensanka	Ronald Small	Roland Wood
Pat and Thomas Person	Gary & Diane Smith	David Zgarrick
Katherine Petsos	Mindy Smith	
	Daphne Smith Marsh	

The APhA2014 Annual Meeting and Exposition in Orlando, FL, was a huge success!



APhA Foundation Women in Pharmacy 5K Fun Run/Walk

We had a tremendous turnout for our first-ever Women in Pharmacy 5K Fun Run/Walk. Over 350 meeting attendees – students and pharmacists, men and women, and athletes of all skill levels – joined us for this inaugural event dedicated to raising funds to establish programming for women’s and children’s health initiatives. Thank you to Walgreens (Gold Sponsor) and McKesson/RxOwnership (Bronze Sponsor) for supporting this event!

APhA Foundation Annual Contributors’ Breakfast

Always a highlight, the 2014 Annual Contributors’ Breakfast honored the generosity and commitment of our donors. We also officially installed the 2014-2015 APhA Foundation Board of Directors. The 2014 Jacob W. Miller Award was presented to Bill Ellis, executive director of the Board of Pharmacy Specialties, who was executive director of the APhA Foundation from 1997 to 2010. Ben Bluml, SVP of Research & Innovation, provided an overview of research activity and an insight into what is ahead for the APhA Foundation.



APhA Foundation Tools and Research to Advance Pharmacy Practice

Another new event in 2014 was a forum hosted by the APhA Foundation’s research and innovation team. The event focused on how we apply innovation in pharmacy practice through our research initiatives.



Thank you to those who joined us and participated in our events!



A Celebration of Excellence

We honored Bowl of Hygeia Award recipients past and present in a new way in Orlando at the “Celebration of Excellence” event, combining the Bowl of Hygeia Reception and Remington Honor Medal Dinner and Dessert Reception. The event recognized past and present Bowl of Hygeia recipients and 2014 Remington Honor Medalist Marilyn K. Speedie. Thanks to Boehringer Ingelheim for its support of the Celebration of Excellence as Premier Supporter of the 2014 Bowl of Hygeia program.

APhA Foundation and State Pharmacy Foundations Wine Tasting and Silent Auction

The Wine Tasting and Silent Auction was once again a popular event! More than 250 people attended and bid on auction items ranging from themed gift baskets to jewelry to experiences such as being “CEO for the Day” at APhA. The event featured wines from Avalon Wines. On the eve of his induction as APhA president, Matt Osterhaus was seen pouring wines and visiting with APhA members and supporters of the profession.



APhA Foundation Charity Golf Event

Prior to the Annual Meeting, the APhA Foundation was fortunate to be the beneficiary of a charity golf event at Isleworth Golf & Country Club in Windermere, FL. Thanks to long-time Foundation supporter and board member Bruce Laughrey and his wife Kandi for hosting 28 players for a day on the links and a dinner at their home following the tournament. Many thanks also to Larry O’Brien of MP USA Marketing Group Inc. for supplying participant gifts for the golfers including APhA Foundation branded t-shirts, golf balls, and golf bags.

LB Brown – Longest drive

Grant Brown – Closest to the pin

Chris Decker – Longest putt

The team of Ziad Ghanem, Marlin Hutchens, and John Michael O’Brien took home first place honors.

Corporate and Foundation Sponsors

Thank you for your generous support!

Amgen

Bank of America Charitable Foundation Matching Gift Program

Boehringer Ingelheim Pharmaceuticals

Bristol-Myers Squibb Foundation

BulaLaw

Cardinal Health Foundation, Inc.

CDC Division of Heart Disease and Stroke Prevention

Community Pharmacy Foundation

Edelman

Endo Pharmaceuticals

EPIC Pharmacies, Inc.

Independent Pharmacy Alliance

Knowlton Foundation

McKesson

MedImmune, LLC

Merck & Co., Inc.

Merck Partnership for Giving

MP USA Marketing Group

Oncology Pharmacy Services, Inc.

PACE Alliance

Pfizer Inc.

Pharmacists Mutual Companies

Sanofi-Aventis

TEVA Pharmaceuticals

Transaction Data Systems

Walgreens CO/IL

APhA Foundation 2014 Board of Directors

Ed Hamilton, PharmD, FAPhA,
President
Lake Alfred, FL

Mark Cziraky, PharmD, CLS, FAHA,
Vice President
Wilmington, DE

Tom Menighan, BSPHarm, MBA, ScD (Hon), FAPhA,
Secretary
Washington, DC

Bruce Laughrey, BPharm,
Treasurer
Windermere, FL

Tim Canning, BS Marketing
Cincinnati, OH

Leonard Edloe, M. Div., PharmD
Mechanicsville, VA

Stuart Haines, PharmD, BCPS, BACP, BC-ADM
Wellington, FL

Jerry Moore, RPh, FAPhA, JD
Indian Springs, AL

Thomas Temple, RPh, MS
Des Moines, IA

Megan Tucker, BS Foreign Service
Washington, DC

Kelly Valente, PharmD, RPh, USPHS
Middletown, RI

Eleanor Vogt, RPh, PhD
San Francisco, CA

Lucianne West
(not pictured)

APhA-ASP National President-elect
Boston, MA



APhA Foundation Staff



Mindy D. Smith, BSPHarm, RPh
Executive Director

Benjamin M. Bluml, BSPHarm, RPh
Senior Vice President of
Research and Innovation

Ryan Burke, PharmD
Executive Resident, 2013-14

Laurella Ganey
Director of Finance

Megan Lewis
Communications Manager

Lynette Sappe-Watkins, CFRE
Director of Development

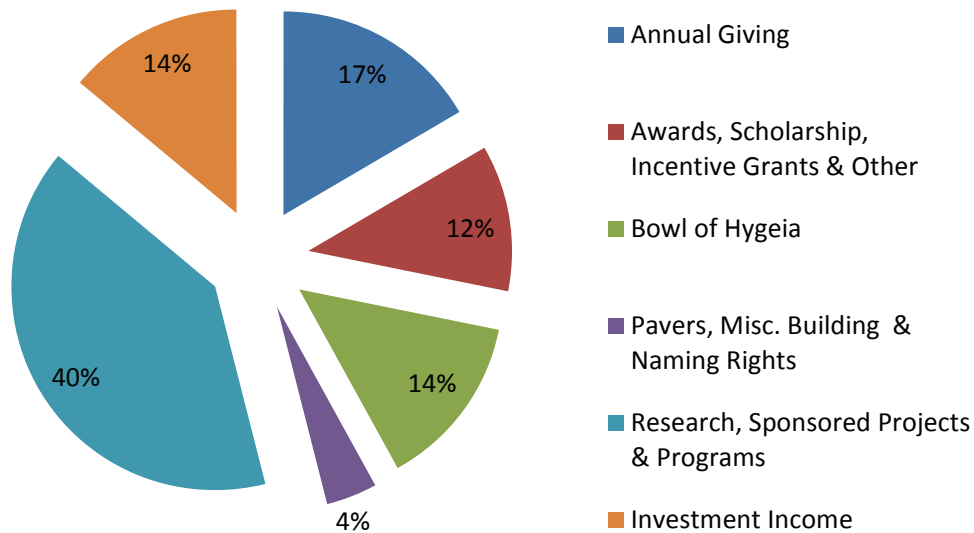
Caroline Shedlock
Administrative Manager and
Communications Associate

Alicia Simmons
Development Coordinator

Brian Wall, PharmD
Executive Resident, 2014-15

Lindsay Watson, PharmD
Director of Applied Innovation

APhA Foundation Support 2014



Annual Giving	17%	\$ 276,931.00
Awards, Scholarship, Incentive Grants & Other	12%	\$ 194,265.00
Bowl of Hygeia	14%	\$ 230,906.00
Pavers, Misc. Building & Naming Rights	4%	\$ 67,541.00
Research, Sponsored Projects & Programs	40%	\$ 669,683.00
Investment Income	14%	<u>\$ 233,033.00</u>
		\$ 1,672,359.00

STATEMENT OF FINANCIAL POSITION*

	Year-End 2014	Year-End 2013
Total Assets	\$6,511,506	\$7,310,632
Total Liabilities	\$856,531	\$922,686
Unrestricted	\$2,411,523	\$3,280,494
Restricted	\$3,243,452	\$3,107,452
Total Net Assets	\$5,654,975	\$6,387,946
Total Liabilities & Net Assets	\$6,511,506	\$7,310,632

*Unaudited